

Annual Report FY2020

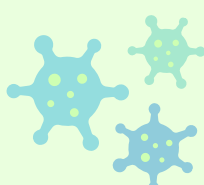
Waynesboro Public Library

LIBRARY OPEN TO THE PUBLIC:

July 2019–February 2020

COVID-19 RELATED CLOSURE:

March 2020–July 2020



Circulation

Total Check Outs	172,000
Adult Books	57,600
Large print	5,650
Teen/YA Items	4,250
Kids books	51,600
Videos	51,500
Holds placed	29,150

E-books

Hoopla	6,330
Overdrive	12,900

Users

Adult	7,300
Seniors	3,650
Children	2,050
New Users	730
Foot Traffic	97,850
Room Reservations	372
WiFi Sessions	24,000
PC Sessions	16,000

Programming

Childrens programs	260
Childrens attendees	4,000
Adult programs	130
Adult attendees	1,400